

WRAP 5-7

User guide



POMI Industri ApS

Abildvadvej 5, Thorup, DK-9610 Nørager

Tlf. +45 98 55 20 00, Fax +45 98 55 22 00, Mobil +45 40 34 20 10

E-mail: pomi@pomi.dk - Hjemmeside: www.pomi.dk

Contents

1.	POMI WRAP 5 - 7 WRAPPER	4
2.	SAFETY INSTRUCTIONS	4
3.	EU DECLARATION OF ACCORDANCE.....	5
4.	MACHINE IDENTIFICATION.....	6
5.	BEFORE START.....	6
6.	CHANGE FROM TRANSPORT TO WRAPPING	7
7.	WRAPPING	8
7.1.	POSITIONING OF BALES BEFORE WRAPPING BY WRAP 5	9
7.1.1.	Square bales	9
7.2.	POSITION OF BALES BEFORE WRAPPING BY WRAP 7, STACKING WITH A BIG BALE FORK.	10
7.2.1.	Square bales	10
7.2.2.	Round bales	11
8.	FINISHING	12
9.	CHANGE OF FOIL ROLLER.....	12
10.	MACHINE OPERATIONS (BEFORE 2016)	13
10.1.	ELECTRICAL BOX.....	13
10.2.	REMOTE CONTROL	14
11.	HYDRAULIC SYSTEM	15
12.	FOIL GUARD.....	16
13.	BOTTOM FOIL BRACKET	16
14.	MACHINE OPERATIONS YEAR 2016 -.....	17
14.1.	ELECTRICAL BOX OPERATIONS	17
14.2.	ELECTRICAL BOX OPERATIONS	18
14.3.	REMOTE CONTROL.....	19
14.4.	PROGRAMMING THE REMOTE CONTROL	19
15.	HYDRAULIC SYSTEM	20
16.	FOIL GUARD	21
17.	BOTTOM FOIL BRACKET	21
18.	MAINTENANCE.....	22
18.1.	CHECK BEFORE SEASON	22
19.	GOOD ADVICE	23
20.	OPTIONAL EQUIPMENT.....	24
20.1.	HYDRAULIC LIFT OF TOWER.....	24
20.2.	FOIL ROLL BASKET.....	25
21.	PROBLEMS	26

Updated on 29.06.2017

1. POMI Wrap 5 - 7 Wrapper

Congratulations - You have chosen a line wrapper machine. It can be used for wrapping straw.

If used for anything else, you must have a written authorization from the manufacturer.

The manufacturer disclaims any liability for damage to products and/or crops.

A tube of foil is formed, next the bales are fed and put on the ground. The pusher arms push the machine forward so that space is made for more bales.

2. Safety instructions

FOR YOUR OWN SAFETY

- Never work on the machine without the motor being stopped and the emergency stop on the electrical box being activated.
- Do not allow unauthorized persons within a distance of 10 m from the wrapper when it is in operation. There are two reasons for this: partly the machine may suddenly move, and partly oil may squirt from a damaged oil line. The bales may also tip over, if they are stacked incorrectly.
- When driving on the road, the tower must be lowered if a hydraulic lift is included. There must not be foil rollers on the horizontal part at the top.
- The guard at the rear end must be closed during operation.
- Tidy the machine, especially around the motor, so that fire does not occur. Oil spillage must be removed before restarting the motor.
- Lights according to law must be working.
- Keep the remote control in a safe place so that you do not push the buttons by accident, e.g. if you carry the remote control in your pocket while changing the foil roll and then lean towards the machine accidentally pushing one of the buttons and starting the machine.
- The wind can course the start sensor starting the machine

3. EU DECLARATION OF ACCORDANCE

Manufacturer: POMI Industri ApS
Abildvadvej 5, Thorup
DK-9610 Nørager
Tel. +45 98552000
Company

Hereby declares that

Machine: Wrapper machine _____
Make type, series no., year

- a) is manufactured in accordance with decisions made in the Council's Directive of 14th June 1989 about mutual approach of the member states' legislation as regards machines (89/392/EØF) changed on 20th June 91 (91/368/EØF) (93/44/EØF) and (93/68/EØF), under special reference to exhibit I of the directive of severe safety and health requirements in connection with design and manufacturing of machines.

Especially:

- b) is manufactured in accordance with the following harmonized standards (Directive article 5, paragraph 2).
- c) is manufactured in accordance with other standards and/or technical specifications.

Signature

Date

Poul Mikkelsen
Manager
POMI Industri ApS

4. Machine identification

When ordering parts please state the serial number. You will find the serial no. on the left side of the hydraulic tank (see ill.). The motor no. is found on the left side of the motor.



Serial no. _____

Motor no. _____

5. Before start

- Fuel.
- Check that the hydraulic oil is in mid position.
- Study the motor instructions before starting up and heating the motor.

Motor revolutions are set to max. 2800.

6. Change from transport to wrapping

- Position the machine with a tractor or loader in the correct direction, in stacking position.
- Disconnect the tractor and remove the cable.
- Push the emergency stop.
- Start the motor according to the motor instructions.
- Switch the emergency stop out of lock-position.
- Lift the entire machine by running down the supports. First the 2 at the rear end and then the 2 in the front.
- Remove the two wheels and insert the profile tube into the small profile tube in the rear end (see illustration).
- Place the wheels in the corners
- Run up the supports, first the front supports and then the 2 rear supports.



- Change the pusher from transport position to wrapper position (see illustration).



Wrapper position



Transport position

- The machine is ready for wrapping.

7. Wrapping

Start by fastening the foil to the two rods on the pusher. Wrap 8 layers of foil. Unfasten the foil and let the machine run automatically until the foil reaches the end of the spears.

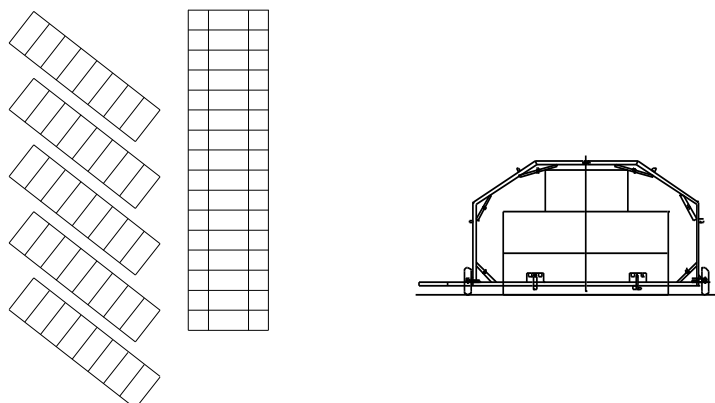
The start sensor must be adjusted so that the machine starts when the last bale is lifted on.

If the stack turns, the bales must be positioned with air between in one side and squeezed in the other side.

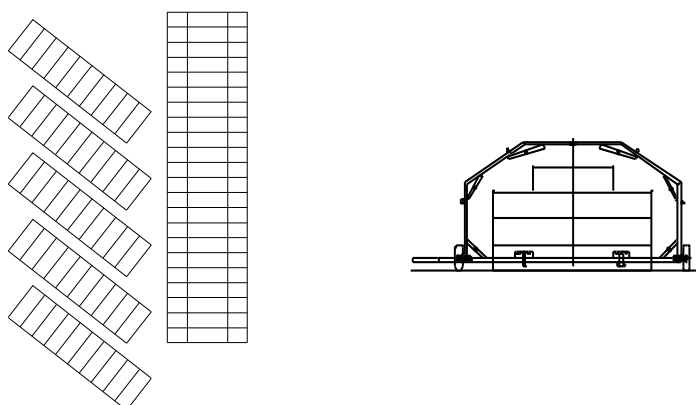


7.1. Positioning of bales before wrapping by Wrap 5

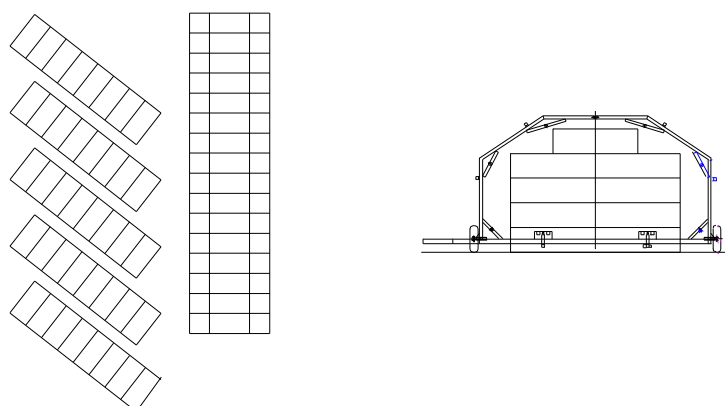
7.1.1. Square bales



Big bales: 120 x 120 x 240 cm. 2 bales on top of each other and 75 cm between the stacks.



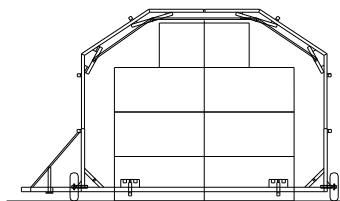
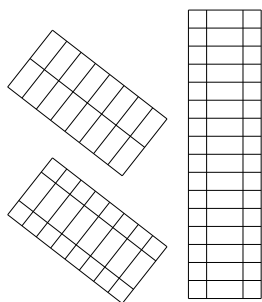
Mini-big bales: 80 x 90 x 240 cm. 3 bales on top of each other and 75 cm between the stacks.



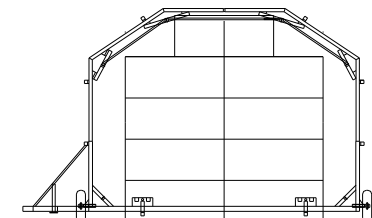
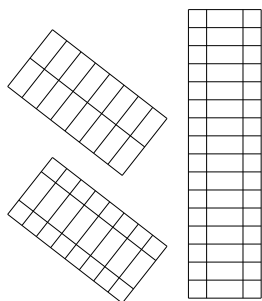
Class bales: 70 x 120 x 240 cm. 4 bales on top of each other and 75 cm between the stacks.

7.2. Position of bales before wrapping by Wrap 7, stacking with a big bale fork.

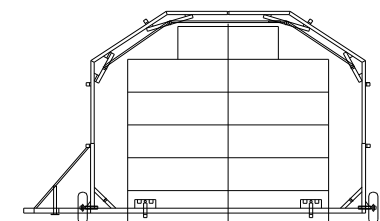
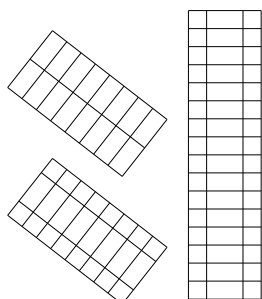
7.2.1. Square bales



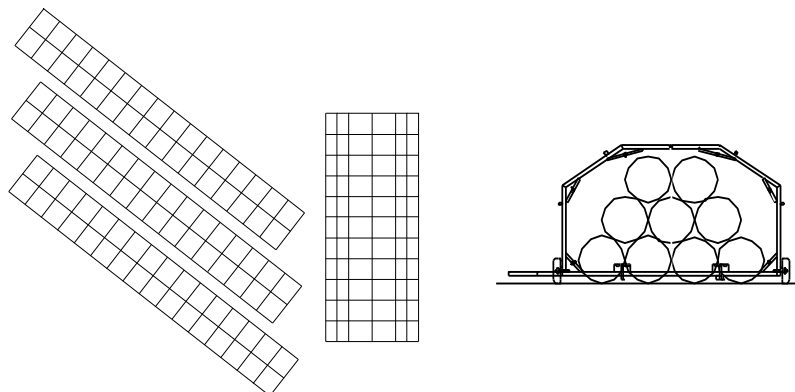
Big bales 120 x 120 x 240 cm 3 and 4 bales in each stack alternately and 75 cm clear space between stacks.



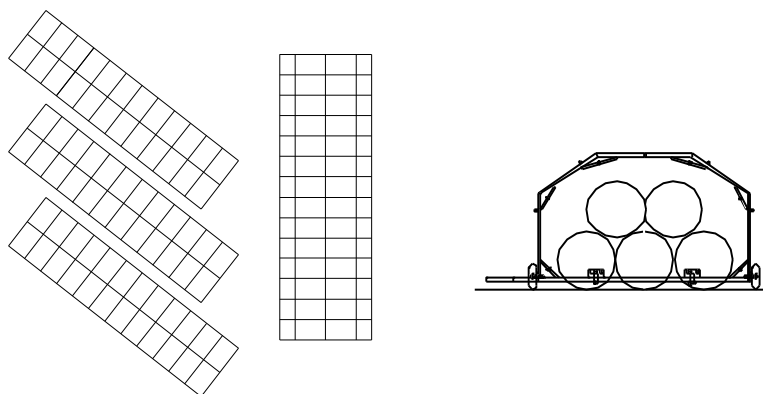
Big bales 100 x 120 x 240 cm. 4 and 5 bales in each stack alternately and 75 cm clear space between stacks.



Big bales 80 x 120 x 240 cm or 90 x 120 x 240 cm. 5 and 6 bales in each stack alternately and 75 cm clear space between stacks.

7.2.2. Round bales

Round bales \varnothing 135 cm: Round bales are stacked in one layer two next to each other and there must be 75 cm between the stacks.



Round bales \varnothing 180 cm. Round bales are stacked in one layer two next to each other and 75 cm between stacks.

8. Finishing

When the foil tube is long enough to fully cover the ends of the last bales, wrap some extra rounds at the end of the foil tube to give a strong end. Cut off the foil at a suitable length.

Set up the machine to run by itself so that it runs as free of the stack as possible. Move the baler a short distance away from the stack by dragging with a tractor using the hitch (see illustration).



The bottom foil is removed so that the wheels can be mounted. If you are not going to drive on a road you can leave the bottom foil on, as there are 2 positions for the transport wheel.

Please remember: The foil rolls must not lie on the horizontal part up top during on-road driving. If you have a hydraulic hoist, remember to lower the tower before entering the road. If hydraulic lift is included, the tower must be lowered before transport on roads.

9. Change of foil roller

Check that the foil roll bracket is positioned so that it can be reached when the guard in the rear end is open.

Push the emergency stop button and stop the motor.

Open the guard in the rear end.

Change the foil roll and close the guard.

Start the motor and switch on the emergency stop.

10. Machine operations (before 2016)

10.1. Electrical box

Emergency stop Depressing this button will stop all functions in the electrical box. To reactivate turn the switch from locked position, and re-activate the function requested.

Ready When the emergency stop is released the lamp ready is lit.

Start This button starts the wrapping process. It can also stop it again if pushed once again.

Forward When pushing this button, the pusher arms run out.

Foil When pushing this button, the wrapper rotates the foil.

Auto When pushing this button, light is switched on and the machine will automatically start wrapping when the last bale is positioned. By pushing once again, it is switched off.

Spear Push this button to activate the chains on the spears.

Backward When pushing this button, the pusher arms retract.



10.2. Remote control



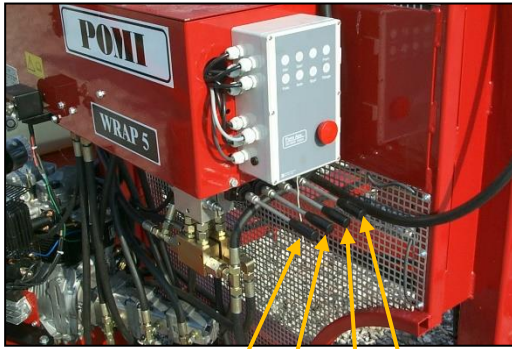
A/Red has the same function as **Start**.

B/Grey has the same function as **Foil**.

C/Green has the same function as **Spear**.

D/Yellow has the same function as **Backward**.

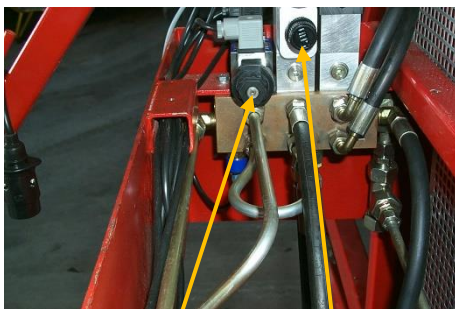
11. Hydraulic system



1 2 3 4

In front of the machine, 2 or 4 hydraulic handles are positioned:

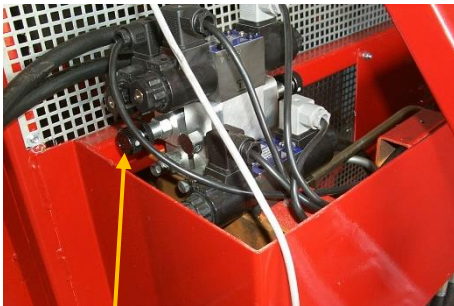
1. adjusts the height of the tower in the front.
2. adjusts the height of the tower in the rear end.
3. raises the 2 supports in the rear end.



2 1

Valve 1) changes the speed of the chains fitted on the spears.

A screw is positioned in the middle of the pressure sensitive switch 2), which is to regulate the pressure of the pusher arms. If the pusher does not come back, turn the screw in and increase the pressure. If the pusher does not return but remains out due to overpressure turn the screw out and lower the pressure.



3

Valve 3) changes the speed of the chains fitted to the wrapper.

Hydraulic oil: Hydro Texaco HD Z LT 46 DIN HLP 46.

Hydraulic pressure:	Spear	120 Bar
	Pusher bars	120 Bar
	Wrapper	150 Bar

12. Foil guard



A foil guard is positioned in one corner, it consists of a bar sensing the wrapped foil, if only 1 layer of foil is used. If the foil tears the bar will fall down and activates a switch that stops the machine. Pushing Start or Foil will restart the machine, till the foil guard has contact with the foil again.

13. Bottom foil bracket

The bottom foil bracket consists of some boxes placed on the chassis frame for two rolls of bottom foil. The foil is fed through the foil tube and the bales are positioned on it.




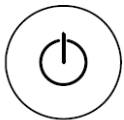
14. Machine operations year 2016 -

14.1. Electrical box operations



Emergency stop

Depressing this button will stop all functions in the electrical box. To reactivate turn the switch from locked position, and re-activate the function requested. When the emergency stop is released the lamp under  is lit and the machine is ready.



This button starts the wrapping process. It can also stop it again if pushed once again.



When pushing this button the pusher arms run out.



When pushing this button, the wrapper rotates the foil.



Not applicable.



Push this button to activate the chains on the spears.



When pushing this button the pusher arms retract.

14.2. Electrical box operations



Here you can change 2 times. The one who regulate how far the pusher go out before the foil starts to run and how long time it takes to move the pusher back.

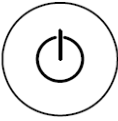
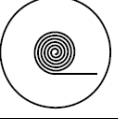
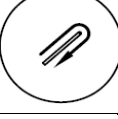
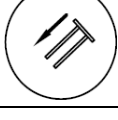
Press ESC until start appears.

Press ▼ or ▲ to find the value you want to change. Press OK to confirm.

Press ► or ◀ to find the number you want to change.

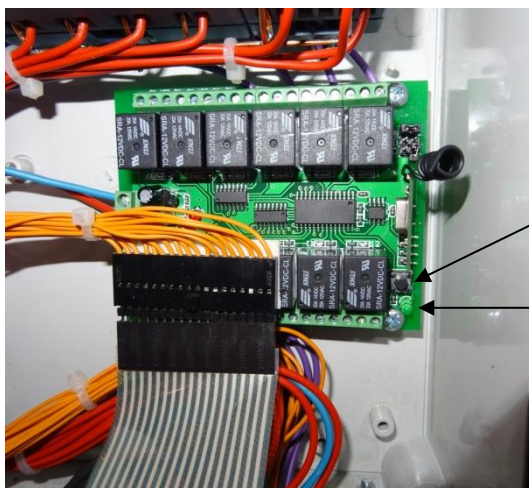
Press ▲ to find at larger number or ▼ to find a smaller number. When you have the desired number press OK to confirm.

14.3. Remote control

Button	Function	Same function as
1	This button starts the wrapping process. It can also stop it again if pushed once again.	
2	When pushing this button, the wrapper rotates the foil.	
3	Push this button to activate the chains on the spears.	
4	When pushing this button the pusher arms retract.	
5		
6		
7		
8		
9		
10		
11		
12		



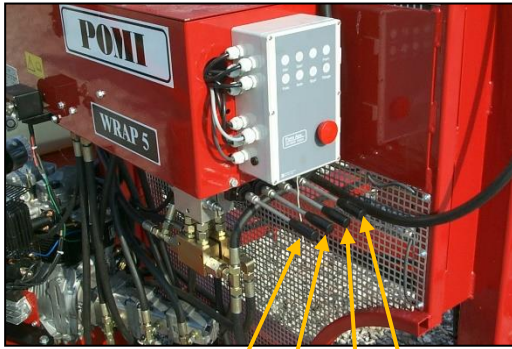
14.4. Programming the remote control



If you have to program a new remote control you need to open the electrical-bok and press the black button A then the lamp B lights up. Then press the 1 button on the remote control. Then the remote control is ready for use.



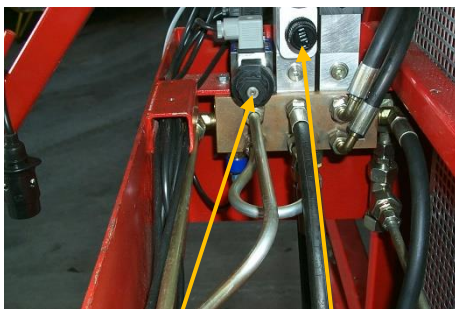
15. Hydraulic system



1 2 3 4

In front of the machine, 2 or 4 hydraulic handles are positioned:

- 4. adjusts the height of the tower in the front.
- 5. adjusts the height of the tower in the rear end.
- 6. raises the 2 supports in the rear end.



2 1

Valve 1) changes the speed of the chains fitted on the spears.

A screw is positioned in the middle of the pressure sensitive switch 2), which is to regulate the pressure of the pusher arms. If the pusher does not come back, turn the screw in and increase the pressure. If the pusher does not return but remains out due to overpressure turn the screw out and lower the pressure.



3

Valve 3) changes the speed of the chains fitted to the wrapper.

Hydraulic oil: Hydro Texaco HD Z LT 46 DIN HLP 46.

Hydraulic pressure:	Spear	120 Bar
	Pusher bars	120 Bar
	Wrapper	150 Bar

16. Foil guard

A foil guard is positioned in one corner, it consists of a bar sensing the wrapped foil, if only 1 layer of foil is used. If the foil tears the bar will fall down and activates a switch that stops the machine. Pushing Start or Foil will restart the machine, till the foil guard has contact with the foil again.

17. Bottom foil bracket

The bottom foil bracket consists of some boxes placed on the chassis frame for two rolls of bottom foil. The foil is fed through the foil tube and the bales are positioned on it.



18. Maintenance

- Clean around the motor daily or when needed, to avoid fire.
- Grease the bearings daily.
- Lubricate the pusher arms and chains with chain oil. When replacing chains, only use original chains.
- After the first day adjust, the wheels, after that adjust twice a year.
Tightening torque = 100 Nm

18.1. Check before season

Make sure the machine is stopped and the emergency stop activated.

- ☐ Oil change
- ☐ Change oil filter
- ☐ Change fuel filter
- ☐ Clean air filter
- ☐ Change hydraulic filter
- ☐ Check hydraulic oil stand
- ☐ Pre-stretchers
- ☐ Wrapping chains must have been tightened.
- ☐ Check the distance between the chain rails (W=1177 mm)
- ☐ Pull chains for wrapper must have been tightened
- ☐ Spear chains must have been tightened.
- ☐ Wheels must have been adjusted (Tightening torque = 100 Nm)

Start the machine.

- ☐ The foil guard to the other side so that it has not contact with the sensor.
- ☐ Electrical box and remote control have been checked on all channels.

19. Good advice

- To ensure the optimum protection against the wind it is recommended to work against the most dominant wind direction so the foil forms a roof.
- It is recommended to work on a plane surface where any water will sink into the ground.
- If the land rises, it is recommended to work uphill.
- It is a good idea to place the stack in the shelter of a windbreak.
- In order to prevent the foil from slipping in the overlap, it is best to wrap in calm weather.

20. Optional equipment

20.1. Hydraulic lift of tower



The tower is raised at the front and rear end alternately so that the chains are tightened.

When the tower is run down, 4 bolts are used to fix the chains. See to it that the pre-stretchers are positioned as illustrated below and not on the two vertical surfaces. The tower runs down the front and rear end alternately.

During transport the tower must be in low position.



Wrap 5

Wrap 7

Wrap 5

Foil rollers must be positioned at the marked areas.

20.2. Foil roll basket



The basket contains app. 15 rolls and 4 rolls of bottom foil.

The inside dimensions of the basket: 1150 x 2700 mm - Height = 800 mm

It is loaded on the machine with a forklift truck.

21. Problems

Problem	Solution
Machine	
Insufficient motor output.	<ul style="list-style-type: none"> – Change the fuel filter – Clean air filter
The pusher arms cannot push the bales.	<ul style="list-style-type: none"> – Check the hydraulic pressure (120 bar).
Carrier link breaks	<ul style="list-style-type: none"> – Check that the chain rails have the correct spacing $W = 1177$ mm. – Check the bottom chain guide.
Wrapper stops.	<ul style="list-style-type: none"> – Check the oil pressure (150 bar). – Chains are not lubricated – Chains are too tight – Chains are running off track.
Straw	
Moisture in the bottom of the stack.	<ul style="list-style-type: none"> – Use extra bottom foil.
Moisture in the top of the bales.	<ul style="list-style-type: none"> – The straw must be dry and ripe before it is pressed and wrapped. – It might help to make holes in the sides of the foil. – The sooner the straw is used the fewer problems. We recommend the straw to be used before mid-spring.